

ALUMINIUM SYSTEMS @  
**HUECK** Lambda

霍柯铝合金门窗系统 (Lambda系列)  
WINDOW AND DOOR SYSTEM



ALUMINIUM SYSTEMS @  
**HUECK**  
GERMAN ENGINEERING SINCE 1814



窗系统 (样角)  
WINDOWS



门系统 (样角)  
DOORS

# ALUMINIUM SYSTEMS @ HUECK Lambda

## 铝合金系统 THE SYSTEM

### 模块化系统

Lambda 系统是由65M, 77L, 75以及90系列构成的模块化门窗系统, 其不仅能满足隔热需求, 还同时兼顾了产品的功能性及美观性。Lambda系统设计基于模块化系统构成。玻璃压条、五金件、角码、T型件以及附加型材都可以在各系列间交叉使用。

#### 系统概况:

- 四种型材厚度: 65mm, 77 mm, 75 mm, 90mm
- 三腔型材, 隔热条可先复合, 之后进行涂层处理
- 多种附加方案可满足不同的隔热需要, 适用于所有型材: 隔热穿条随后插入

#### 其他特点:

- 纤细的可视面外观, 高质量的五金配件, 以及多种开启方式可实现多种设计可能。
- 门下横和门槛的多样解决方案, 例如: 四边门形式的开启和非机加工简易门槛。
- 开启范围进一步延伸, 最小扇宽可达350mm
- 可选RAL 测试, 隐形或可视五金配件
- 玻璃扣条有开口和闭腔两种形式
- 多种易于安装的墙体连接件

### MODULAR SYSTEM

The Lambda system with its individual series 65M, 77L, 75 and 90 always offers an optimum solution for various requirements in terms of thermal insulation, functionality and aesthetics. As Lambda is designed according to the modular system principle, the glazing beads, fittings, corner brackets, T-brackets and supplementary profiles can be used across series.

#### The Lambda system at a glance:

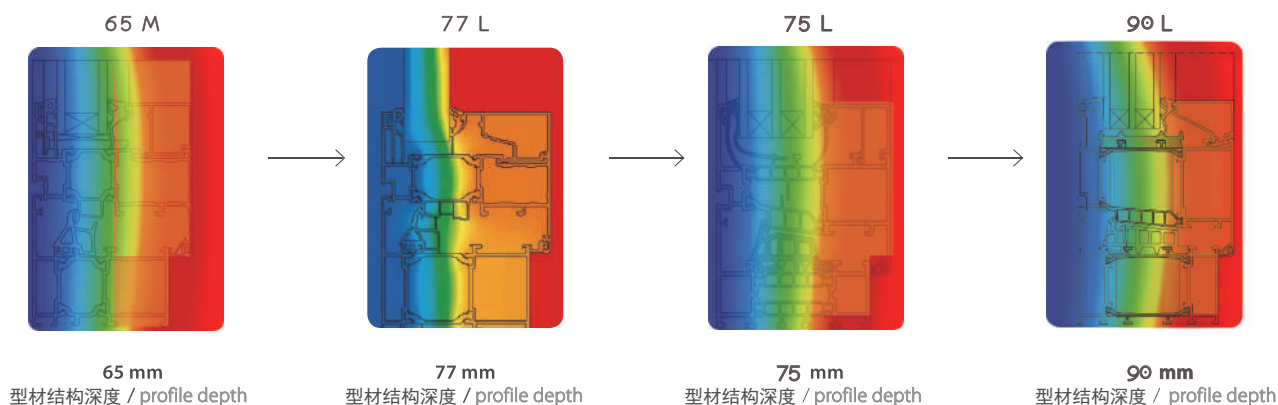
- Four profile depths: 65mm, 77mm, 75mm, 90mm
- Three-chamber profiles, factory-mounted insulation compound, suitable for subsequent coating
- Variable additional measures for different insulation requirements, optional subsequent insertion of insulating strips for all profile geometries

#### Additional features:

- Manifold design possibilities thanks to narrow elevation widths, high-grade fittings and accessories as well as numerous opening variants
- Diverse bottom rail and threshold solutions, e.g. with continuous sash profile or simple bottom rail solution (without mechanical processing)
- Improved turning performance: even small sash widths up to 350 mm are possible
- Optional RAL-tested or exposed fittings and screw-on or barrel hinges
- Open and closed glazing beads
- Numerous easy-to-mount wall connection variants

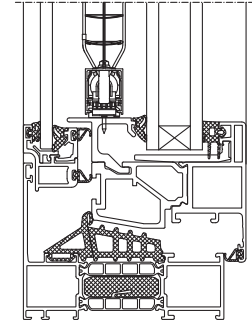
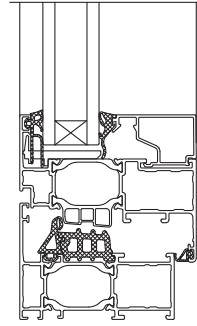
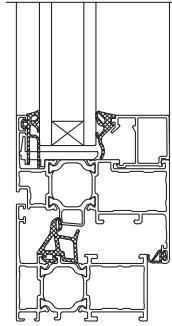
## 隔热保温

### VARIABLE INSULATION



## 窗系统

## WINDOW SYSTEM

**HUECK Lambda 65 M****HUECK Lambda 77 L****HUECK Lambda 100**

## 设计特点

- 最大扇重170kg
- 纤细的固定框/扇组合宽度，最低为90,5mm
- 固定框：65mm
- 扇框：76mm
- 工厂复合的带强化玻璃纤维的隔热条
- 玻璃厚度：22mm – 55mm

- 最大扇重170kg
- 纤细的固定框/扇组合宽度，最低为90,5mm
- 固定框：77mm
- 扇框：88mm
- 工厂复合的带强化玻璃纤维的隔热条
- 玻璃厚度：22mm – 67mm

- 最大扇重170kg
- 纤细的固定框/扇组合宽度，最低为78mm
- 固定框：100mm
- 扇框：111mm
- 工厂复合的带强化玻璃纤维的隔热条，可进行其他的保温处理以满足特殊保温要求
- 玻璃厚度：28mm – 34mm

## DESIGN FEATURE

- Max. sash weight 170 kg
- Narrow elevation width of fixed frame/sash combination from 90.5 mm
- Fixed frame: 65mm
- Sash frame: 76mm
- Factory-mounted, glass fibre-reinforced polyamide strips
- Glass thickness between 22 mm and 55mm

- Max. sash weight 170 kg
- Narrow elevation width of fixed frame/sash combination from 90.5 mm
- Fixed frame: 77 mm
- Sash frame: 88 mm
- Factory-mounted, glass fibre-reinforced polyamide strips
- Glass thickness between 22 mm and 67mm

- Max. sash weight 170 kg
- Narrow elevation width of fixed frame/sash combination from 78 mm
- Fixed frame: 100 mm
- Sash frame: 111mm
- Factory-mounted, glass fibre-reinforced polyamide strips, with possibility to implement different actions for special thermally specifications
- Glass thickness between 28 mm and 34mm

## 胶条

- 中央密封条：隔热中空胶条，具有硫化转角或作为硫化框
- 玻璃/槽口胶条：内外可视面狭窄，可连续置入
- 所有胶条具有滑动聚合物涂层，适用于自洁玻璃

- 中央密封条：标准中空胶条或可选择高隔热中央胶条以达到特殊U值要求两者均具有硫化转角或作为硫化框
- 玻璃/槽口胶条：内外可视面狭窄，可连续置入。也可在玻璃扣条下安装额外的可插入式隔热泡沫条以满足隔热需求
- 所有胶条具有滑动聚合物涂层，适用于自洁玻璃

- 中央密封胶条：标准中空胶条或可选择高隔热中央胶条以达到特殊U值需求，两者均具有硫化转角或作为硫化框
- 玻璃/槽口胶条：内外可视面纤细，可连续置入，也可在玻璃压条下安装额外的可插入式隔热泡沫条以满足隔热需求
- 所有胶条具有聚合物涂层，适用于自洁玻璃

## GASKETS

- Centre seal gasket: thermally insulating hollow chamber gasket with vulcanised corners or optionally vulcanised frame
- Glazing/rebate gaskets: narrow view on inside and outside, gaskets can be drawn in continuously
- All gaskets coated with sliding polymer, suitable for self-cleaning glazing

- Centre seal gasket: standard hollow chamber gasket or optionally high-insulating centre seal gasket for special U value requirements, both with vulcanised corners or as a vulcanised frame
- Glazing/rebate gaskets: narrow view on inside and outside, gaskets can be drawn in continuously, if required additional insulation wedge at the glazing bead
- All gaskets coated with sliding polymer, suitable for self-cleaning glazing

- Centre seal gasket: high-insulating centre seal gasket for special U value requirements, both with vulcanised corners or as vulcanised frame
- Glazing/rebate gaskets: narrow view from inside and outside, gaskets can be put in continuously, if required additional insulation wedge at the glazing bead
- All gaskets coated with sliding polymer, suitable for self-cleaning glazing

## 检测结果\*

## PERFORMANCE CHARACTERISTICS\*

隔热性能 THERMAL TRANSMITTANCE DIN V 4108-4	U <sub>f</sub> 1,9 W/(m <sup>2</sup> K) – 2,5 W/(m <sup>2</sup> K) U <sub>f</sub> 1.9 W/(m <sup>2</sup> K) – 2.5 W/(m <sup>2</sup> K)	U <sub>f</sub> 1,0 W/(m <sup>2</sup> K) – 2,1 W/(m <sup>2</sup> K) U <sub>f</sub> 1.0 W/(m <sup>2</sup> K) – 2.1 W/(m <sup>2</sup> K)	U <sub>f</sub> ≥ 1,1 W/(m <sup>2</sup> K) U <sub>f</sub> ≥ 1.1 W/(m <sup>2</sup> K)
水密性 WATERTIGHTNESS EN 12208	≥ 9A Class ≥ 9A	≥ 9A Class ≥ 9A	E 1200 Class E 1200
气密性 AIR PERMEABILITY EN 12207	4级 Class 4	4级 Class 4	4级 Class 4
抗风压 RESISTANCE TO WIND LOAD EN 12210	C2 – C5	C2 – C5	C5

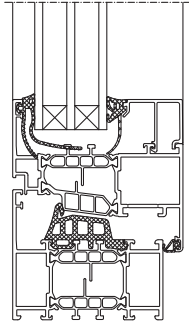
# 多种开启方式 OPEN IN EVERY DIRECTION

- ✓ 内开内倒
- ✓ 平开
- ✓ 先内倒再平开
- ✓ 内倾

- ✓ 上悬外开
- ✓ 内开及外开

- ✓ Turn-tilt
- ✓ Side-hung
- ✓ Tilt before turn
- ✓ Top-hung

- ✓ Top-hung projecting out
- ✓ Inward and outward opening



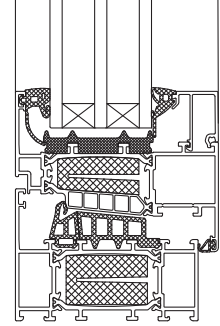
**HUECK Lambda 75**

- 最大扇重200kg
- 纤细的固定框/扇组合宽度，最低为90mm
- 固定框：75mm
- 扇框：85mm
- 工厂复合的带强化玻璃纤维的隔热条
- 玻璃厚度：8 mm – 63mm

- Max. sash weight 200 kg
- Narrow elevation width of fixed frame/sash combination from 90 mm
- Fixed frame: 75 mm
- Sash frame: 85 mm
- Factory-mounted, glass fibre-reinforced polyamide strips
- Glass thickness between 8 mm and 63mm

- 中央密封条：隔热中空胶条，具有硫化转角或作为硫化框
- 玻璃/槽口胶条：内外可视面狭窄，可连续置入
- 所有胶条具有滑动聚合物涂层，适用于自洁玻璃

- Centre seal gasket: thermally insulating hollow chamber gasket with vulcanised corners or optionally vulcanised frame
- Glazing/rebate gaskets: narrow view on inside and outside, gaskets can be drawn in continuously
- All gaskets coated with sliding polymer, suitable for self-cleaning glazing



**HUECK Lambda 90**

- 最大扇重200kg
- 纤细的固定框/扇组合宽度
- 固定框：90mm
- 扇框：100 mm
- 工厂复合38mm 带强化玻璃纤维的隔热条
- 玻璃厚度：23mm – 72mm

- Max. sash weight 200 kg
- Narrow elevation width of fixed frame/sash combination from 90 mm
- Fixed frame: 90 mm
- Sash frame: 100 mm
- Factory-mounted, glass fibre-reinforced polyamide strips
- Glass thickness between 23 mm and 72 mm

- 中央密封条：隔热中空胶条，具有硫化转角或作为硫化框
- 玻璃/槽口胶条：内外可视面狭窄
- 扇的玻外胶条为硫化框设计
- 固定扇的玻璃胶条为硫化框设计
- 所有胶条具有滑动聚合物涂层，适用于自洁玻璃

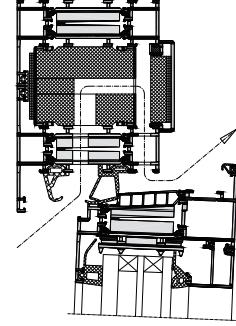
- Centre seal gasket: thermally insulating hollow chamber gasket with vulcanised corners or optionally vulcanised frame
- Glazing/rebate gaskets: narrow view on inside
- External glazing gasket for the sash: vulcanized frames
- Glazing gasket for fixed lights: vulcanized frame
- Linear meter gaskets, all gaskets coated with sliding polymer, suitable for self-cleaning glazing

$U_f \geq 0,7 \text{ W/m}^2\text{K}$   
 $U_r \geq 0,7 \text{ W/m}^2\text{K}$

$\geq 9A$   
Class  $\geq 9A$

4级  
Class 4

C5 – B5



**HUECK Lambda SA**

- 最大扇重200kg
- 纤细的固定框/扇组合宽度，最低为90mm
- 固定框：90mm
- 扇框：100mm
- 工厂复合的带强化玻璃纤维的隔热条
- 保温处理以满足特殊保温要求
- 玻璃厚度：23mm – 72mm

- Max. sash weight 120 kg
- Narrow elevation width of fixed frame/sash combination from 90 mm
- Fixed frame: 90 mm
- Sash frame: 100 mm
- Factory-mounted, glass fibre-reinforced polyamide strips
- Glass thickness between 23 mm and 72 mm

- 中央密封条：隔热中空胶条，具有硫化转角或作为硫化框
- 玻璃/槽口胶条：内外可视面狭窄
- 所有胶条具有滑动聚合物涂层，适用于自洁玻璃

- Centre seal gasket: Gasket with vulcanised corners or optionally vulcanised frame
- Glazing/rebate gaskets: narrow view on inside and outside, gaskets can be drawn in continuously
- All gaskets coated with sliding polymer, suitable for self-cleaning glazing

$U_f \geq 0,7 \text{ W/m}^2\text{K}$   
 $U_r \geq 0,7 \text{ W/m}^2\text{K}$

$\geq 9A$   
Class  $\geq 9A$

4级  
Class 4

C5 – B5

## 门系统 DOOR SYSTEM

Lambda门是一个灵活的模块化系统，并与窗系统相适应。如同窗配件一样，用于三腔门系统的配件，如胶条、连接件、补充型材及玻璃压条可以进行多个系列之间的交叉使用。

### 系列配件

型材厚度为65，77和75，90的门系统均具有相同的室内及室外分型材，而隔热腔体的厚度有所不同。这两种门不仅胶条能完美的进行匹配，其使用的玻璃扣条也完全相同，因此，两种门的配件大部分都是相同的。这些型材的腔室尺寸与窗系列模块完全相同，因此窗系列的配件也完全适用于门。

### 顶级隔热

型材厚度为90的门通过附加配置，能达到最低的U值。

Lambda doors are designed as a flexible modular system and adjusted to the window system. Just like the window accessories, the accessories for the flexible 3-chamber door system - i.e. gaskets, connectors, supplementary profiles and glazing beads - can be used across various series as well.

### CROSS-SERIES ACCESSORIES

Even though the doors of the 65, 77 and 75, 90mm profile depths both have identical half-shells on the inside and on the outside, they differ with regard to the depth of their insulation zones. Thanks to the matching gasket housing of both doors and the identical glazing system that is used, the accessories for both doors are identical to a large extent.

The 90 mm profile depth is designed as a three-chamber profile solution as well. Typical for Lambda: these profiles also perfectly match the modular window system so that the accessories from the window series can be used here without any problems.

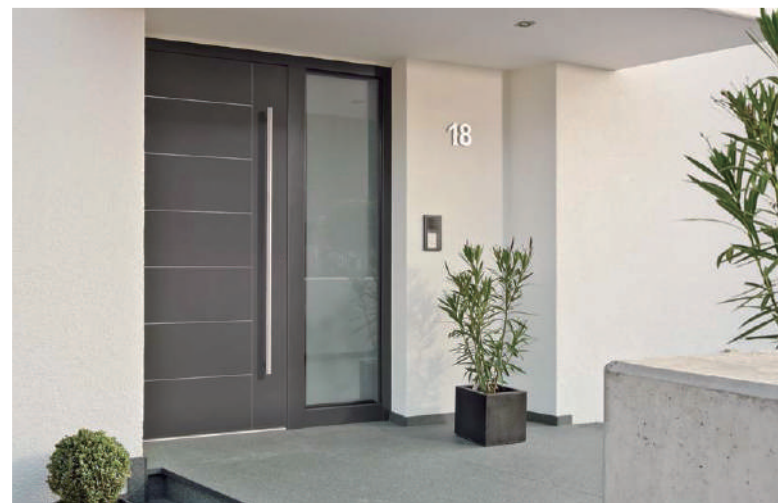
### TOP-CLASS INSULATION

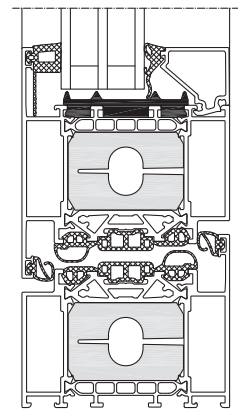
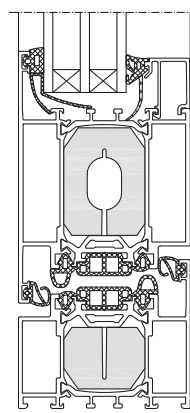
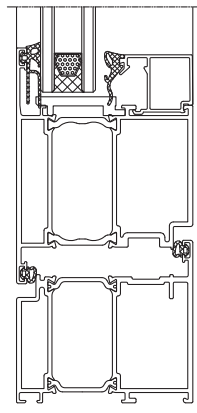
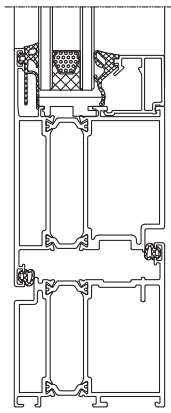
The doors of profile depth 90 in particular enable to achieve lowest  $U_f$  values by means of optional additional measures.

## HIGHLIGHTS

- ✓ **Delta-T-复合方式防止双金属效应**  
 一个简单而有效的解决方案将扇型材同Delta-T复合件相连接，以降低由于温度差异而造成的变形。
- ✓ **Deltatherm compound against bi-metal effect**  
 A simple but ingenious solution consisting of leaf profiles that are connected in a shear-deformable way to efficiently reduce possible deformation caused by major differences in temperature.

- ✓ **槽口区域的绝热穿条**  
 U值降低到1.3W/m<sup>2</sup>K
- ✓ **U-value barrier in the rebate area**  
 Further reduction of the  $U_f$  values to 1.6 W/m<sup>2</sup>K





### HUECK Lambda 65 M

- 最大扇重190kg
- 纤细的固定框/扇组合宽度，最低为148mm
- 内外齐平
- 固定框：65mm
- 扇框：65mm
- 玻璃厚度：22mm – 43mm
- 门槛解决方案：具有连续叶型、卡扣式塑料型材或高度可调的地面密封
- 适用于后续安装
- 铰链可用螺丝钉固定

### HUECK Lambda 77 L

- 最大扇重190kg
- 纤细的固定框/扇组合宽度，最低为148mm
- 内外齐平
- 固定框：77mm
- 扇框：77mm
- 玻璃厚度：22mm – 54mm
- 门槛解决方案：具有连续叶型、卡扣式塑料型材或高度可调的地面密封
- 适用于后续安装
- 铰链可用螺丝钉固定

### HUECK Lambda 75 M

- 最大扇重250kg
- 纤细的固定框/扇组合宽度，最低为148mm
- 内外齐平
- 固定框：75mm
- 扇框：75mm
- 玻璃厚度：22mm – 53mm
- 门槛解决方案：具有连续叶型、卡扣式塑料型材或高度可调的地面密封
- 适用于后续安装
- 铰链可用螺丝钉固定

### HUECK Lambda 90

- 最大扇重250kg
- 内外齐平
- 固定框：90mm
- 扇框：90mm
- 玻璃厚度：24mm – 68mm
- 带绝缘桥的优化的“Lambdatherm”绝缘区，用于直接拧紧硬件零件
- 内外平开门使用相同的配件及五金（门合页），优化了生产
- 与入户门HUECK LambdaDS 090 FD系列和窗户系列HUECK Lambdaws 090兼容

- Sash weight up to 190 kg
- Narrow elevation width of fixed frame/sash combination from 148 mm
- Inside and outside flush
- Fixed frame: 65 mm
- Sash frame: 65 mm
- Glass thickness between 22 mm and 43 mm
- Bottom rail solutions: with continuous leaf profile, snap-on plastic profile or height-adjustable ground seal
- Threshold suitable for subsequent installation
- Hinge can be fixed by means of screw dowel

- Sash weight up to 190 kg
- Narrow elevation width of fixed frame/sash combination from 148 mm
- Inside and outside flush
- Fixed frame: 77 mm
- Sash frame: 77 mm
- Glass thickness between 22 mm and 54 mm
- Bottom rail solutions: with continuous leaf profile, snap-on plastic profile or height-adjustable ground seal
- Threshold suitable for subsequent installation
- Hinge can be fixed by means of screw dowel

- Sash weight up to 250 kg
- Narrow elevation width of fixed frame/sash combination from 148 mm
- Inside and outside flush
- Fixed frame: 75 mm
- Sash frame: 75 mm
- Glass thickness between 22 mm and 53 mm
- Bottom rail solutions: with continuous leaf profile, snap-on plastic profile or height-adjustable ground seal
- Threshold suitable for subsequent installation
- Hinge can be fixed by means of screw dowel

- Sash weight up to 250 kg
- Inside and outside flush
- Fixed frame: 90 mm
- Sash frame: 90 mm
- Glass thickness between 24 mm and 68 mm
- Optimised "Lambdatherm" insulation zone with insulating bridges for direct screwing of hardware parts
- Production-optimised through use of the same parts and the same hardware (door hinges) for doors opening in and out
- Compatible with the front door series HUECK LambdaDS 090 FD and the window series HUECK Lambdaws 090

- 工厂复合的带有强化玻璃纤维的隔热条, 已经过剪切力测试

- 固定框具有工厂复合的强化玻璃纤维隔热条
- 扇型材异形隔热条非抗剪连接, 减少双金属效应
- 可为不同的隔热需要提供多种额外隔热方式。例如: 凹槽腔体U值密封块, 玻璃槽口隔热, 隔热腔体置入隔热泡沫

- 工厂复合的带有强化玻璃纤维的隔热条, 已经过剪切力测试

- 工厂复合的带有强化玻璃纤维的隔热条, 已经过剪切力测试

- Shear-connected compound using factory-mounted glass fibre-reinforced polyamide strips

- Fixed frames with shear-connected compound using factory-mounted glass fibre-reinforced polyamide strips
- Sash profiles come without shear connection, so-called flexible Deltatherm-compound, to reduce the bi-metal effect
- Variable additional measures for different thermal insulation demands, e.g. U-value blocker in rebate chamber, glass rebate insulation, insert strips for the insulating chamber

- Shear-connected compound using factory-mounted glass fibre-reinforced polyamide strips

- Shear-connected compound using factory-mounted glass fibre-reinforced polyamide strips

检测结果 * PERFORMANCE CHARACTERISTICS*	HUECK Lambda 65 M	HUECK Lambda 77 L	HUECK Lambda 75 M	HUECK Lambda 90
隔热性能 THERMAL TRANSMITTANCE DIN V 4108-4	$U_r \geq 2,5 \text{ W/m}^2\text{K}$ $U_r \geq 2.5 \text{ W/m}^2\text{K}$	$U_r \geq 1,6 \text{ W/m}^2\text{K}$ $U_r \geq 1.6 \text{ W/m}^2\text{K}$	$U_r \geq 1,3 \text{ W/m}^2\text{K}$ $U_r \geq 1.3 \text{ W/m}^2\text{K}$	$U_r \geq 1,2 \text{ W/m}^2\text{K}$ $U_r \geq 1.2 \text{ W/m}^2\text{K}$
水密性 WATERTIGHTNESS EN 12208	达到8A级 Up to class 8 A	达到8A级 Up to class 8 A	达到7A级 Up to class 7 A	达到7A级 Up to class 7 A
气密性 AIR PERMEABILITY EN 12207	达到3级 Up to class 3	达到3级 Up to class 3	达到4级 Up to class 4	达到4级 Up to class 4
抗风压 RESISTANCE TO WIND LOAD EN 12210	达到C3 Up to C3	达到C3 up to C3	C2/B2 C2/B2	C3/B3 C3/B3

\* 所有提及的相关标准以打印时有效检测报告为准。欲下载更多技术信息，请登录霍柯网站：www.hueck.com

All standards referred to herein, were valid at time of printing. Valid test reports as well as technical information can be found in the download area of the site www.hueck.com



霍柯公众号 Hueckchin

# 选择霍柯系统产品 获得最佳销售收益

ALUMINIUM SYSTEMS @  
**HUECK** Lambda

窗及门系统

- U<sub>f</sub>值达到0.7 W/m<sup>2</sup>K
- 内外分型材腔体相同
- 高效的连接技术
- 高防盗等级
- 通用的系列配件

ALUMINIUM SYSTEMS @  
**HUECK** Lava

防火系统

- Lava 77-30: 门及固定扇
- Lava 65-30: 门, 固定扇
- Lava 65 - S: 防烟门
- Lava 77-60: 门, 固定扇

ALUMINIUM SYSTEMS @  
**HUECK** Project

个性化项目解决方案

- 全球项目所积累的丰富经验
- 高效、专业的项目服务团队
- 项目实施的全程技术支持

ALUMINIUM SYSTEMS @  
**HUECK** Volato

推拉系统 VOLATO S  
提升推拉系统 VOLATO M

- 纤细的可视面宽度
- 通过产品优化实现筒易加工

ALUMINIUM SYSTEMS @  
**HUECK** Trigon

幕墙系统 Trigon 50/60

- 保温隔热性能高
- 整合多种开启方式
- SG隐框玻璃幕墙

## 我们提供最专业的 产品与服务

- ✓ 由霍柯公司直接控制供货环节, 不存在加工厂造假情况
- ✓ 由霍柯公司监管成品生产、进度及品质
- ✓ 由霍柯公司直接控制生产周期, 快速为大项目供货

### 了解更多合作方式

- 设计师
- 开发商
- 门窗零售店面
- 门窗加工企业



霍柯建筑科技（北京）有限公司

Tel: +86 10 8042 7122  
Fax: +86 10 8042 7510  
info@hueckchina.com  
www.hueck.com

Add: 北京市顺义区绿地启航国际9号楼402室